

Dredge Project Analysis for Lake Odessa by Lake Odessa for the People (LOFTP) 12/2007

Summary: LOFTP is proposing a lesser draw down of the water level in Lake Odessa (minimum of 4.75ft depth). As an alternative, LOFTP is proposing that a dredge project of Lake Odessa be initiated to mitigate the effects of water level drawn down in the summer to 2.5 ft. depths.

Summary of dredge costs: There is appoximately 1.6 million cubic yards to drege.
Cost per cubic yards ranges from a low of \$.57/cu. Yd. to \$5.50/cu. Yd.

Total dredge costs could range from \$.9 miilion to \$8.8 million.

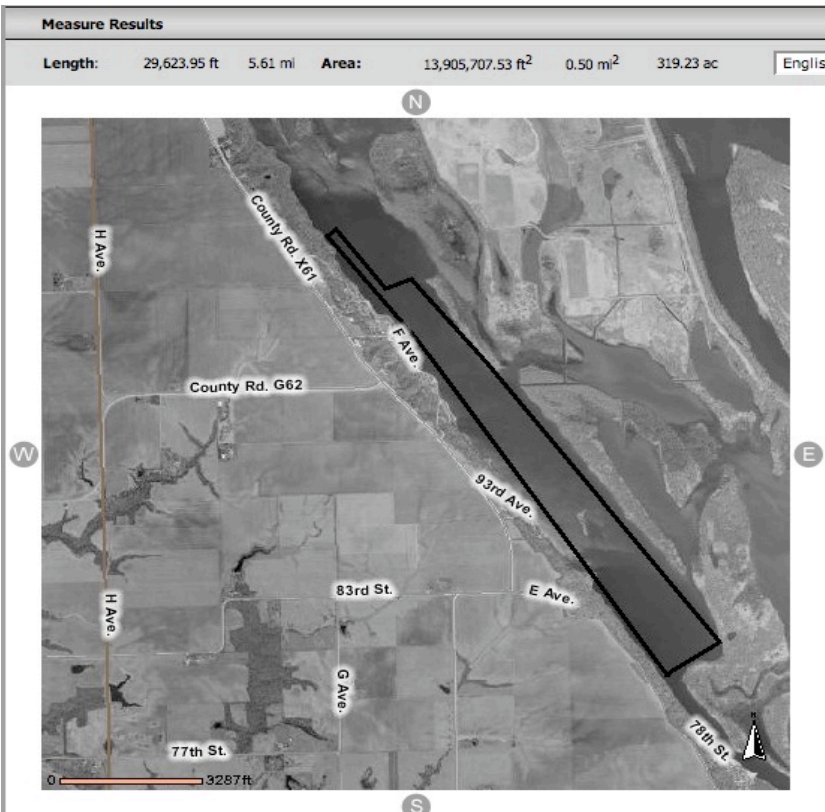
Schafer's access and south		319 acres	Dredge 3 ft.
Sand Run Drege	add	28 acres	Dredge 2 to3 ft.
Corps dredge in 2008	subtract	21 acres	Corps dredged
Island area not dredged	subtract	2 acres	No dredging
Total acres to be dredged		324 acres	

324 acres * 43560 Sq. Ft/acre * 3 ft deeper/27 cu.ft per cu. Yd.= 1568160 cubic yards

The low figure for dredging (\$.57/cu. Yd.) was done in the Emmetsburg Five Island Lake Restoration Project. The city of Emmetsburg bonded to buy their own dredge and do the work. 90% of the residents voted yes on the bond referendum to buy the dredge.

The question has been asked, what do you do with the dredge material. You do the same thing the Corps of Engineers is doing with it in 2008 when they dredge the back waters of Lake Odessa. The dredge material will be put on the islands to drain and trees will be planted on it. Download 650 page Lake Odessa Rehabilitation

Project PDF to see what is going to be done with the dredge material.
<http://www.kenpurdy.com>



<-- 319 acres

The following photos were taken from the Louisa County GIS web site. The measuring tool was used to determine acres.

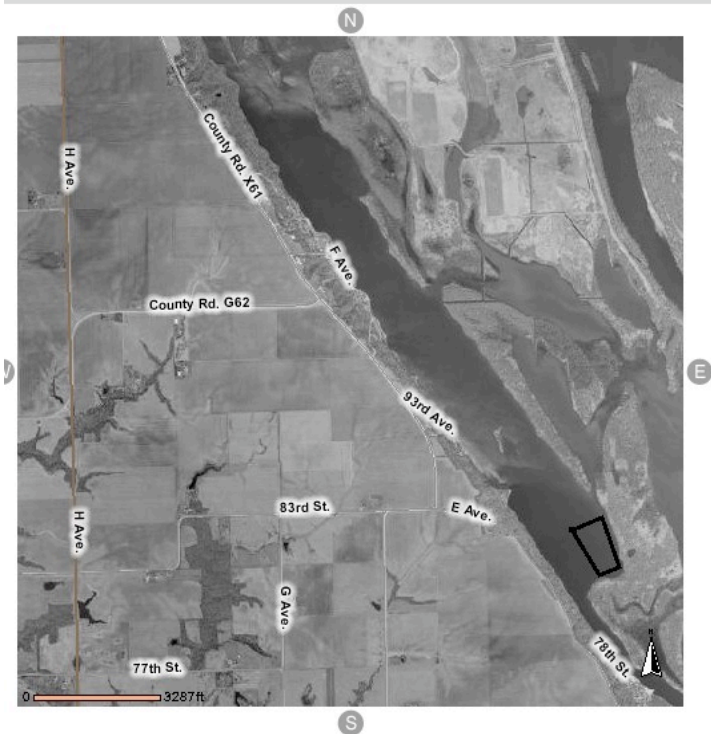
Dredge Project Analysis for Lake Odessa by Lake Odessa for the People (LOFTP) 12/2007

Length: 14,300.83 ft 2.71 mi Area: 1,247,056.25 ft² 0.04 mi² 28.63 ac English



<--- Sand Run Dredge
28 acres

Length: 4,499.41 ft 0.85 mi Area: 925,640.24 ft² 0.03 mi² 21.25 ac English



Length: 1,794.18 ft 0.34 mi Area: 103,760.81 ft² 0.00 mi² 2.38 ac English



Above is an island
not dredged. 2 acres

<-- Corps dredge site 2008
21.25 acres